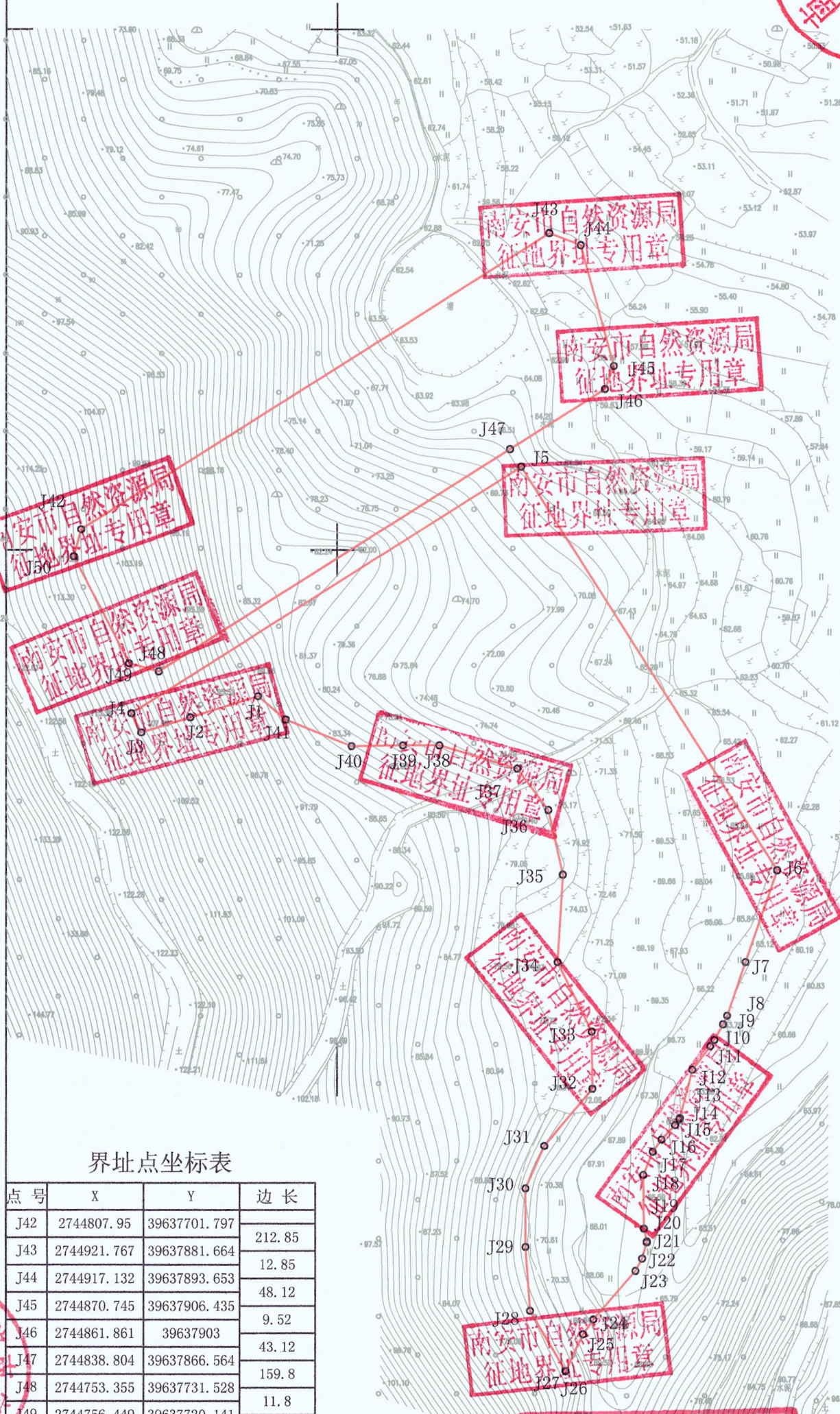


南安市2024-71-01地块征地勘测界定图

39637.673 2745.070 39638.133 2745.070

地块名称: 2024-71-01
 地块面积: 3.8484公顷 合57.726亩
 现状地类: 水田、园地、林地、其他农用地
 权属单位: 官桥镇盐田村、东头村



界址点坐标表

| 点号 | X | Y | 边长 |
|-----|-------------|--------------|--------|
| J1 | 2744743.838 | 39637769.71 | 27.33 |
| J2 | 2744735.709 | 39637743.621 | 19.66 |
| J3 | 2744729.86 | 39637724.847 | 8.31 |
| J4 | 2744737.248 | 39637721.038 | 177.28 |
| J5 | 2744832.043 | 39637870.842 | 184 |
| J6 | 2744676.556 | 39637969.231 | 37.34 |
| J7 | 2744641.224 | 39637957.144 | 21.94 |
| J8 | 2744620.462 | 39637950.041 | 3.72 |
| J9 | 2744617.1 | 39637948.439 | 6.82 |
| J10 | 2744611.146 | 39637945.108 | 2.89 |
| J11 | 2744608.734 | 39637943.507 | 11.33 |
| J12 | 2744599.758 | 39637936.586 | 19.21 |
| J13 | 2744581.158 | 39637931.772 | 0.52 |
| J14 | 2744580.678 | 39637931.585 | 2.8 |
| J15 | 2744578.389 | 39637929.965 | 7.6 |
| J16 | 2744572.821 | 39637924.786 | 5.8 |
| J17 | 2744568.084 | 39637921.438 | 9.67 |
| J18 | 2744559.107 | 39637917.835 | 20.79 |
| J19 | 2744538.32 | 39637918.047 | 5.08 |
| J20 | 2744533.373 | 39637919.185 | 0.37 |
| J21 | 2744533.01 | 39637919.142 | 6.47 |
| J22 | 2744526.785 | 39637917.386 | 5.41 |
| J23 | 2744522.031 | 39637914.794 | 24.63 |
| J24 | 2744503.434 | 39637898.641 | 6.94 |
| J25 | 2744497.724 | 39637894.688 | 15.85 |
| J26 | 2744483.329 | 39637888.059 | 0.15 |
| J27 | 2744483.456 | 39637887.985 | 27.07 |
| J28 | 2744506.84 | 39637874.344 | 24.61 |
| J29 | 2744531.379 | 39637872.536 | 22.65 |
| J30 | 2744554.03 | 39637872.536 | 18 |
| J31 | 2744570.508 | 39637879.791 | 28.75 |
| J32 | 2744592.585 | 39637898.213 | 21.9 |
| J33 | 2744614.487 | 39637897.98 | 29.9 |
| J34 | 2744641.386 | 39637884.923 | 33.78 |
| J35 | 2744675.108 | 39637886.908 | 25.35 |
| J36 | 2744699.841 | 39637881.344 | 20 |
| J37 | 2744715.841 | 39637869.344 | 31.32 |
| J38 | 2744724.841 | 39637839.344 | 14 |
| J39 | 2744724.841 | 39637825.344 | 19.68 |
| J40 | 2744724.563 | 39637805.665 | 27.33 |
| J41 | 2744734.841 | 39637780.344 | 13.93 |
| J1 | 2744743.838 | 39637769.71 | |

界址点坐标表

| 点号 | X | Y | 边长 |
|-----|-------------|--------------|--------|
| J42 | 2744807.95 | 39637701.797 | 212.85 |
| J43 | 2744921.767 | 39637881.664 | 12.85 |
| J44 | 2744917.132 | 39637893.653 | 48.12 |
| J45 | 2744870.745 | 39637906.435 | 9.52 |
| J46 | 2744861.861 | 39637903 | 43.12 |
| J47 | 2744838.804 | 39637866.564 | 159.8 |
| J48 | 2744753.355 | 39637731.528 | 11.8 |
| J49 | 2744756.449 | 39637720.141 | 46.21 |
| J42 | 2744807.95 | 39637701.797 | 10.8 |

2744.430 S2=13775平方米 合20.663亩

S1=24709平方米 合37.063亩 2744.430

39637.673 39638.133

2024年8月数字化制图。
 2000国家大地坐标系: 中央子午线117度。
 1985国家高程基准, 等高距为1米。
 2017年版图式。

1:2000

测量员: 刘荣
 绘图员: 傅燕玲
 检查员: 陈志平

